

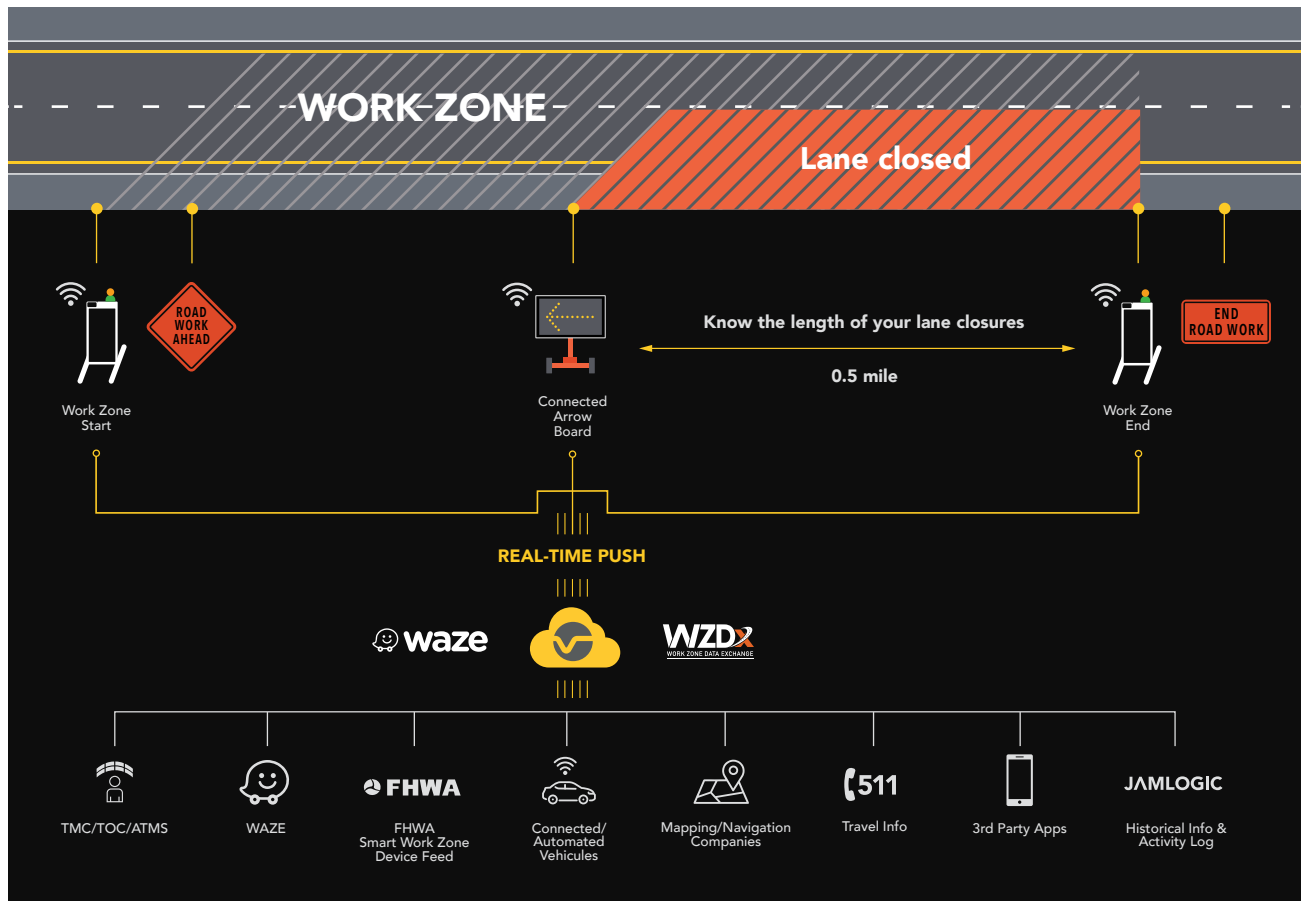
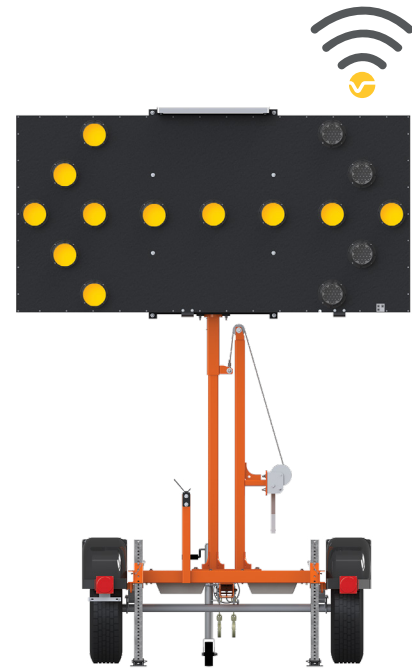
UNIVERSAL RETROFIT KIT TO CONNECT YOUR ARROW BOARD

TURN ANY ARROW BOARD INTO A CONNECTED ARROW BOARD.

At the cutting edge of innovation, our universal retrofit kit can be installed on any manufacturer's arrow board.

Once connected, your arrow board becomes a highly effective traffic management system, enabling it to communicate crucial work zone information to motorists, DOTs, and other relevant parties. Access JamLogic to consult your arrow board's status or data logs.

Indicate lane closures on the road, in navigation systems, and beyond, in real time.



UNIVERSAL RETROFIT KIT TO CONNECT YOUR ARROW BOARD

RETROFIT KIT

Easy to install on any manufacturer's arrow board.

INDICATES

- Lane closure start location
- Mode displayed on arrow sign

COMMUNICATES INFORMATION

- Real-time audible and visual alert on Waze
- Compatible with some infotainment and navigation systems
- Supports Connected Work Zone (CWZ)* data-sharing feeds to exchange data w/ government agencies and other relevant parties

ACTIVITY LOG

- Location, which mode, on/off
- Deployment sensor (optional)

MANAGE VIA JAMLOGIC

- Map and list view in JamLogic
- Remote asset management including location and battery monitoring even if it is turned OFF

* Previously the Work Zone Data Exchange (WZDx)



APPLICATIONS

- Roadway resurfacing projects
- Bridge inspections and repairs
- Maintenance operations
- Work zones with lane closures
- Smart work zones
- Connected work zones

WAZE

Once the Ver-Mac retrofit kit has been installed, connected arrow boards automatically send audible and visual alerts to Waze, letting motorists know an upcoming lane is closed.



QUEBEC, CANADA OFFICE: 1781 BRESSE STREET, QUEBEC CITY, QC, G2G 2V2, CANADA
CONROE, TX OFFICE: 3479 POLLOK DRIVE, CONROE, TX, 77303, USA
T: 418-654-1303 TF: 888-488-7446 F: 418-654-0517