

TRUCK ENTRY WARNING SYSTEM

The Truck Entry Warning System alerts motorists when trucks are about to merge into traffic. This automated system detects, through a non-intrusive sensor, trucks that are off-road and leaving the work zone to enter the roadway.

The sensor transmits the information to a Portable Changeable Message Sign (PCMS) or a trailer with a static sign and flashing beacons so the warning can be displayed to motorists downstream.



Sensor



Truck entry warning trailer

FEATURES

PORTABLE NON-INTRUSIVE TRAFFIC SENSOR

FULLY AUTOMATED SYSTEM

Detects construction vehicles as they move into the acceleration lane on the highway

RADIO COMMUNICATION

With a range of at least 1500ft and a maximum delay of 2 seconds from sensor detection to flashing beacons. Accurately detects 95% of construction vehicles.

FLASHING BEACON RECEIVER TRAILER

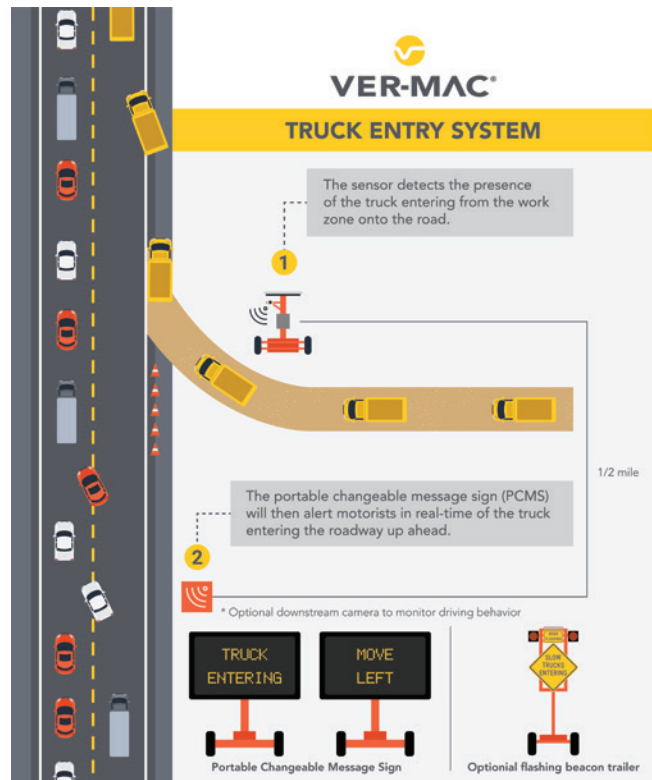
Warning beacons are activated and deactivated in conjunction with a message for traffic sensors (minimum 30 secs)

TRAFFIC SENSOR

Provides an auto-configuration application

JAMLOGIC® SOFTWARE

Enables system monitoring & reporting



TRUCK ENTRY WARNING SYSTEM

JAMLOGIC® FLEET MANAGEMENT SOFTWARE

- View your equipment in a list and GPS map view
- View your battery voltages, see if beacons activated or not, etc.
- Watch Dog Timer to prevent system lockups and automatic power cycling of local system components
- Get the history of date/time of all collected traffic, system health, and maintenance information
- Activation log report
- Organize your equipment in folders (by customer, location, project, etc.)
- Receive e-mail or text alerts – optional (low battery, cellular failure, etc.)
- Data plan with modem

HIGH-QUALITY CONSTRUCTION

4 TELESPPARS

For leveling and stability

TRAILER-MOUNTED (MEETS NCHRP CATEGORY 4 STANDARDS)

Highly visible and equip with a sight tube aiming device

SUPERIOR POWDER COATING FINISH

Impact, humidity, salt spray and rust resistant

TRAFFIC SENSORS

Maintain accurate performance in all weather conditions, temperature changes (from -40 degrees F to +167 degrees F) and humidity (from 5% to 95% (non-condensing))

WARNING BEACONS

Securely mounted and wired (bottom no lower & no higher than 12 in. from the topmost point of the warning sign / horizontally placed in line with the warning sign's left and right points)

POWER SUPPLY

Solar-powered battery units designed to run autonomously year-round

DISPLAY

- W8-H6b warning sign: 48"x48" / min. of 5 ft above the roadway (meets OMUTCD standards)
- Black on orange W16- 13P plaque
- Warning beacons (meet C&MS 731.06 standards):
 - 2 yellow 12-inch LEDs
 - Brightness adjusts automatically
 - Flashes at least 50 times per minute / alternately flashes
 - Illumination period of each flash (min. of 1/2 and a max. of 2/3 of the total cycle)



Truck entry warning trailer - Transport position



Sensor - Transport position



QUEBEC, CANADA OFFICE: 1781 BRESSE STREET, QUEBEC CITY, QC, G2G 2V2, CANADA
CONROE, TX OFFICE: 3479 POLLOK DRIVE, CONROE, TX, 77303, USA
T: 418-654-1303 TF: 888-488-7446 F: 418-654-0517

VER-MAC.COM