



UNIVERSAL RETROFIT KIT TO CONNECT YOUR ARROW BOARD

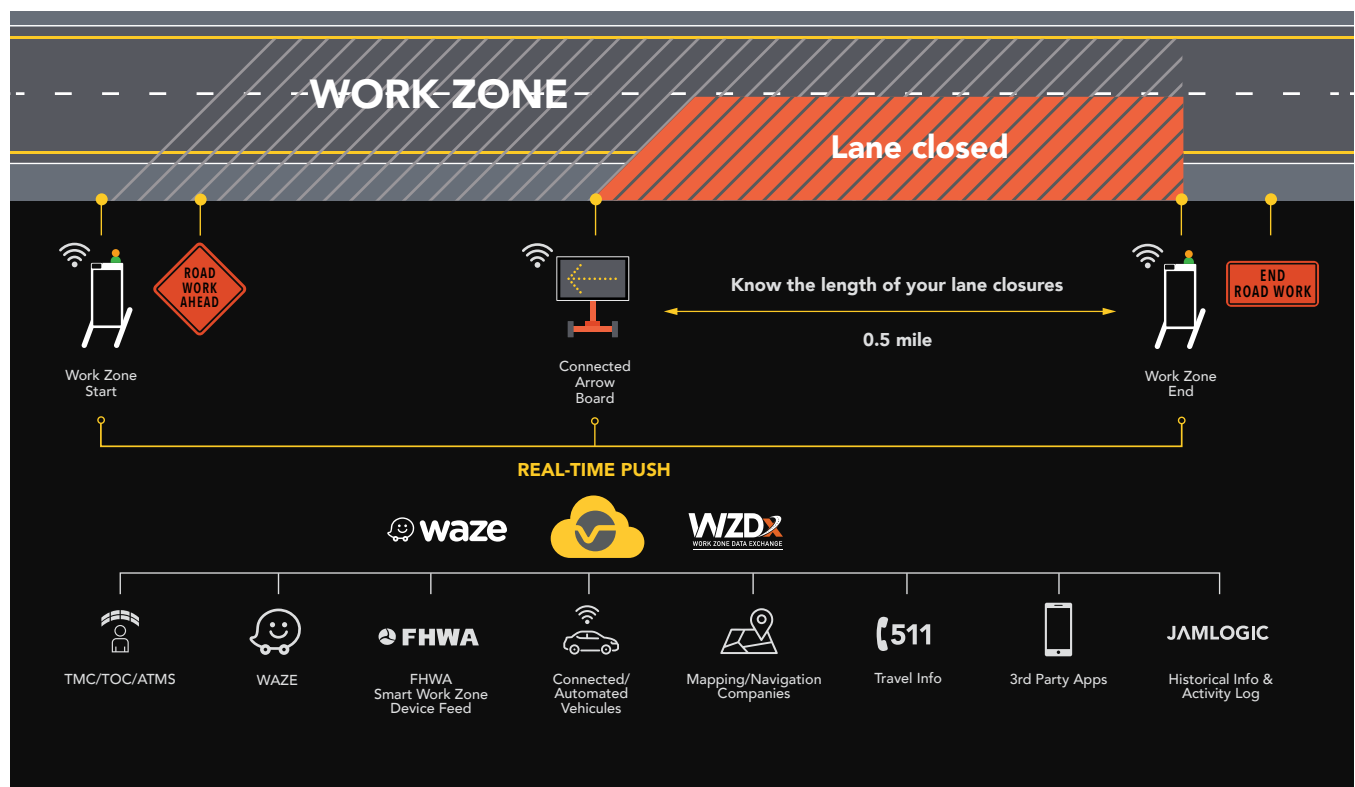
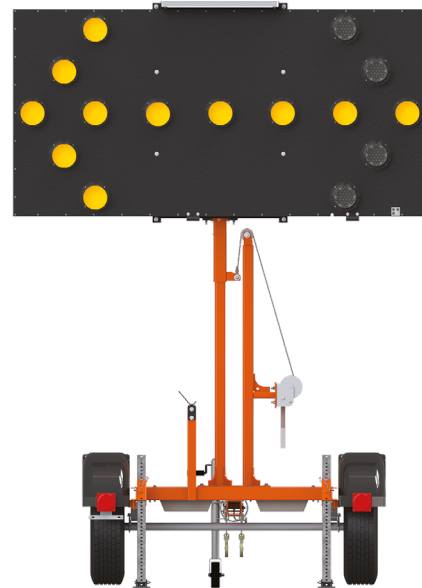


TURN ANY ARROW BOARD INTO A CONNECTED ARROW BOARD.

At the cutting edge of innovation, our universal retrofit kit can be installed on any manufacturer's arrow board.

Once connected, your arrow board becomes a highly effective traffic management system, enabling it to communicate crucial work zone information to motorists, DOTs, and other relevant parties. Access JamLogic anytime to consult your arrow board's status or data logs.

Indicate lane closures on the road, in navigation systems, and beyond, in real time.



RETROFIT KIT

EASY TO INSTALL ON ANY MANUFACTURER'S ARROW BOARD.

INDICATES

Lane closure start location
Mode displayed on arrow sign

COMMUNICATES INFORMATION

Real-time audible and visual alert on Waze
Compatible with some infotainment and navigation systems
Supports Connected Work Zone (CWZ)* data-sharing feeds to exchange data w/ government agencies and other relevant parties

ACTIVITY LOG

Location, mode, on/off
Deployment sensor (optional)

MANAGE VIA JAMLOGIC

Map and list view in JamLogic
Remote asset management including location and battery monitoring even if unit is turned off

* Previously the Work Zone Data Exchange (WZDX)



APPLICATIONS

- Roadway resurfacing projects
- Bridge inspections and repairs
- Maintenance operations
- Work zones with lane closures
- Smart work zones
- Connected work zones

WAZE

Once the Ver-Mac retrofit kit has been installed, connected arrow boards automatically send audible and visual alerts to Waze, letting motorists know an upcoming lane is closed.

