

## WZMC-1000 WORK ZONE MANAGEMENT CAMERA SYSTEM

The WZMC-1000 is a fully-automated cloud-based work zone management camera system that allows contractors and agencies to document their projects. This easy to use, low-cost system provides the users with high-quality videos, automatic video transfer, cloud-based storage, quick access to video storage and easy download of videos. The WZMC-1000 system provides documentation that projects are set up correctly, device counts are accurate, a history of completed activities with a record of dates and time.

### APPLICATIONS

- Protect against future litigation
- Insure accurate daily/weekly/monthly counts of deployed equipment
- Documentation of completed work and activities
- Management tool to review and improve quality control
- Asset Management tool to document quality and condition of a variety of assets

### HOW DOES IT WORK?



1

Videos are recorded via the **Dashcam** mounted to the vehicles windshield.



2

When the vehicle returns to the office, the **Base Station** locates the Dashcam and automatically downloads the videos and sends them to the cloud.



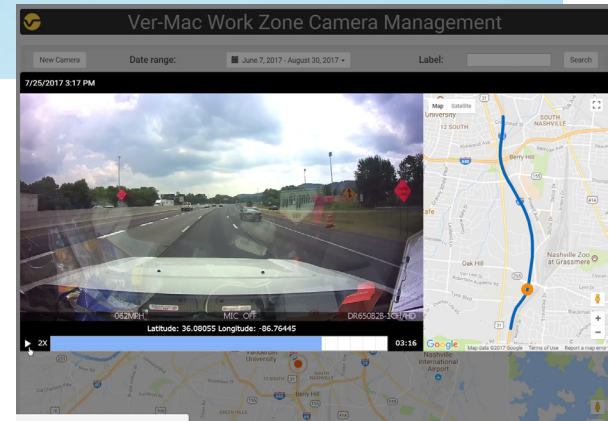
3

The videos are stored in **JamLogic's Video Storage and Retrieval Software** and can easily be accessed from your pc, tablet or smartphone.



4

View the video's utilizing **Ver-Mac's Interactive Video Playback Software** which provides HD quality video's with a dual interactive GPS Google map.



WZMC-1000 SYSTEM COMPONENTS

1 DASHCAM FEATURES

- High-definition camera with integrated Wifi and GPS mounted to windshield
- Camera wired to vehicle battery installs in less than 15 minutes
- Proximity sensor with voice feedback makes starting and stopping recordings effortless
- Rugged case with locked cable prevents camera from being disconnected
- Battery protection circuitry allows the camera battery to be fully charged for video transfer
- Cigarette plug power option available



2 BASE STATION FEATURES

- Automatically downloads videos when dashcam comes in to Wifi range
- One Ver-Mac Base Station Wifi server installed in office
- One or several cameras utilize one server
- No smartphone or cellular communication fees
- No need to retrieve, organize or send videos

3 WORK ZONE CAMERA MANAGEMENT SOFTWARE FEATURES

- Locate and view videos quickly using date/time and/or map
- Name videos by project for enhanced video management
- Download HD videos from your pc, tablet or smartphone
- Videos can be stored and retrieved for up to 3 years

4 INTERACTIVE VIDEO PLAYBACK FEATURES

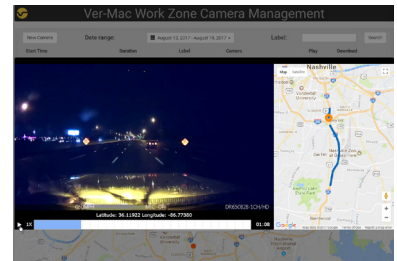
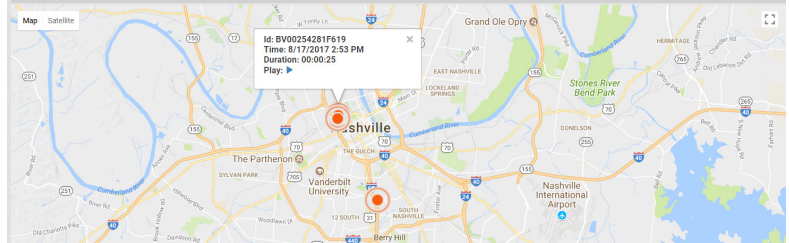
- Dual screen of HD quality video with Interactive GPS Google Map
- Each video has Date/Time and Longitude/Latitude coordinates
- Record videos day or night
- View or download all or portions of the video

Ver-Mac Work Zone Camera Management

New Camera Date range: August 13, 2017 - August 19, 2017 Label: Search

Start Time	Duration	Label	Camera	Play	Download
8/14/2017 9:54 PM	00:04:40	Empty	BV00254281F619	▶	⬇
8/14/2017 10:38 PM	00:05:07	Empty	BV00254281F619	▶	⬇
8/15/2017 6:33 PM	00:00:06	Empty	BV00254281F619	▶	⬇
8/15/2017 11:56 PM	00:07:43	Empty	BV00254281F619	▶	⬇
8/17/2017 2:45 PM	00:00:15	Empty	BV00254281F619	▶	⬇
8/17/2017 2:53 PM	00:00:25	Empty	BV00254281F619	▶	⬇

Showing 1 to 6 of 6 rows



YOUR LOCAL DISTRIBUTOR



1781, BRESSE STREET, QUEBEC, QUEBEC, G2G 2V2, CANADA  
 T: 418-654-1303 TF: 888-488-7446 F: 418-654-0517  
 VER-MAC.COM