



CT-2430 TRAILER-MOUNTED CAMERA

The CT-2430 is a portable camera trailer designed to provide height and stability for the deployment of outdoor dynamic video surveillance. The CT-2430 camera trailer is perfect to remotely monitor work zones, construction sites, special events or any application where permanent cameras are not available or feasible.

FEATURES AND BENEFITS

30' GALVANIZED MAST

Rotates 360 degrees and retracts for easy transport

TILT-AND-ROTATE SOLAR PANELS

Maximize solar recharging and increase battery life

12 VDC / SOLAR POWER SYSTEM

Sustainable video surveillance anywhere

ENVIRONMENTALLY FRIENDLY

No generator, noise or pollution

WIRELESS COMMUNICATION

Remote monitoring from your PC, laptop, tablet or smartphone

MULTI-USE

Accepts most IP video surveillance cameras and non-intrusive traffic sensors

COMPACT DESIGN

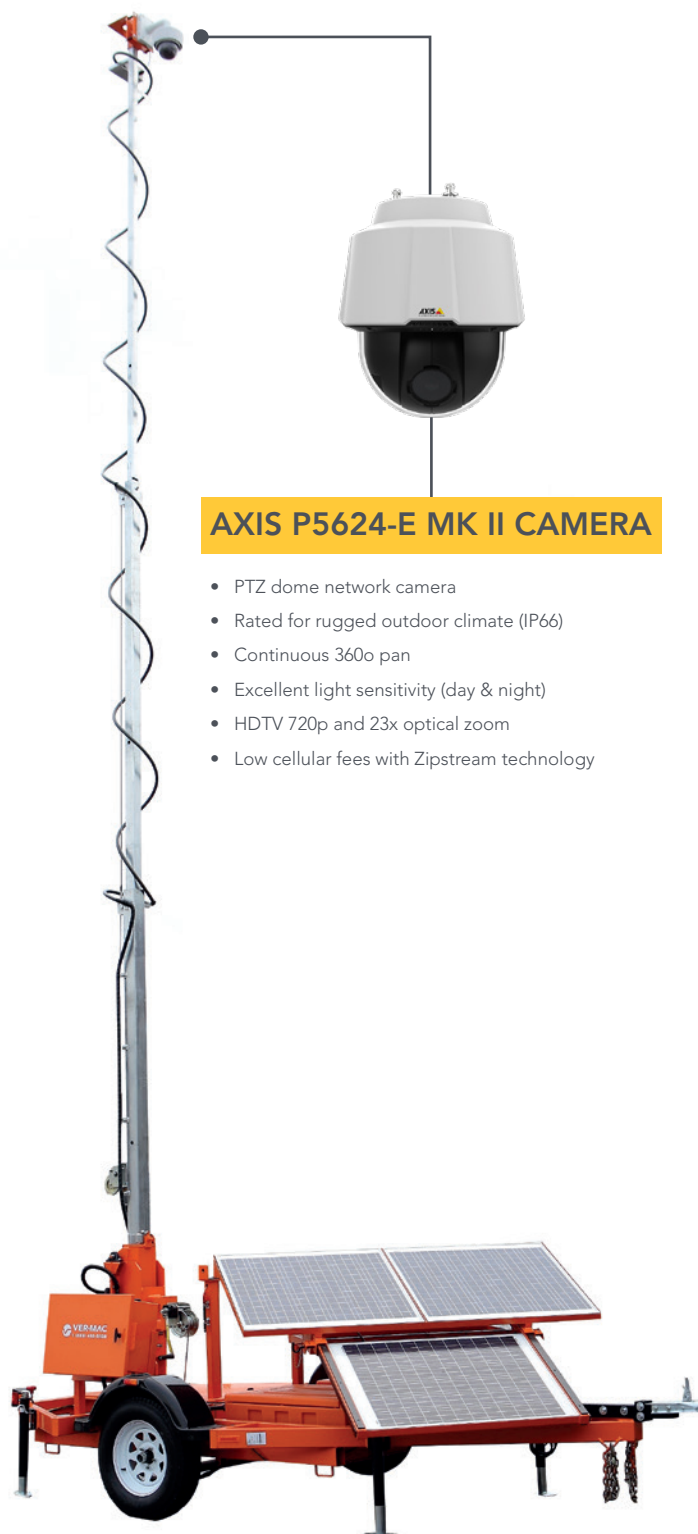
Deploys in 10 minutes and easy to tow and store

PTZ CAMERA CONTROL

Pan, tilt and zoom on your desired location

PRESET VIEWS

Create several views for instant one-click redirecting of camera



AXIS P5624-E MK II CAMERA

- PTZ dome network camera
- Rated for rugged outdoor climate (IP66)
- Continuous 360o pan
- Excellent light sensitivity (day & night)
- HDTV 720p and 23x optical zoom
- Low cellular fees with Zipstream technology

BENEFITS OF REMOTE MONITORING

WORK ZONES

- VIEW INCIDENTS QUICKER - improving emergency response
- SMART WORK ZONE - monitor congestion "hot spots"
- INTEGRATE INTO TMC - manage with existing cameras

CONSTRUCTION SITES

- PROTECT EQUIPMENT - discourage theft and vandalism
- SAVE TIME AND MONEY - less surveillance personnel needed
- MANAGE WORK SITE - Improve scheduling and logistics

SPECIAL EVENTS

- PREVENT INCIDENTS - view and alert security immediately
- VIDEO RECORDING - incident record for investigation
- MANAGE PEDESTRIANS AND MOTORISTS - improve safety and mobility

HIGH-QUALITY CONSTRUCTION

GALVANIZED MAST

Complete protection from rust

POWDER COATING SUPERIOR FINISH

Impact, humidity, salt spray and rust resistant

4 LEVELING JACKS

For stabilization and easy transportation

MANUAL LIFT MECHANISM

For quick deployment

HEAVY-DUTY PLASTIC FENDERS

For durability

PLASTIC BATTERY BOXES

To minimize battery corrosion

LOCKABLE CONTROL BOX

For security

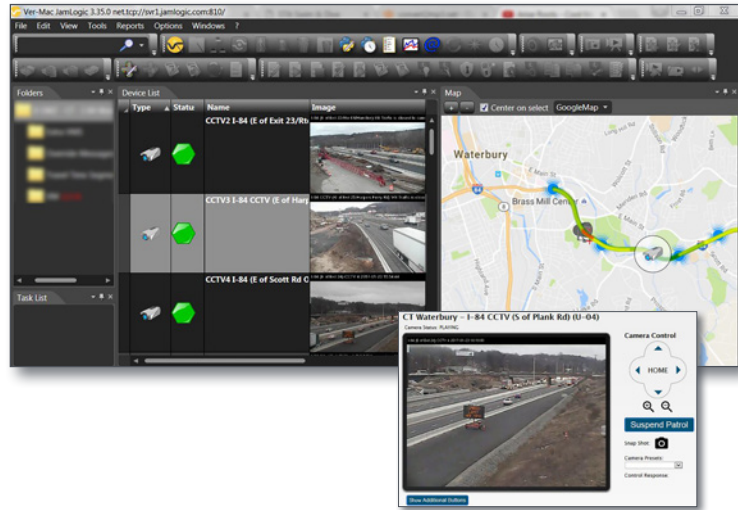
2-IN. (51 MM) COUPLER OR 3-IN. (76 MM) PINTLE EYE

For easy towing

JAMLOGIC SOFTWARE

CT-2430 comes with Ver-Mac's high-speed modem with GPS to maximize your productivity, efficiency and profitability all remotely from your office or home!

- View your equipment in a list and GPS map view
- View you camera images on a single screen
- Interactive list and map view
- Integrate with PCMS and sensors
- View communication status and battery voltages



OVERALL DIMENSIONS

- Overall length: 189 in. (4791 mm)
- Overall width: 90 in. (2292 mm)
- Operating height: 377 in. (9563 mm)
- Traveling height: 63 in. (1591 mm)
- Axle/suspension: 1588 kg (3,500 lb.)
- Weight (approx.): 1280 kg (2,822 lb.)

GENERAL SPECIFICATIONS

- 30 amp battery charger
- 30' galvanized mast

OPTIONS

- Stream live video of work zone
 - Record video
 - Traffic sensor
- Ask for custom options available to meet your needs.

WARRANTY

- 1-year warranty on complete trailers
- 2-year warranty on electronic components manufactured by Ver-Mac

