



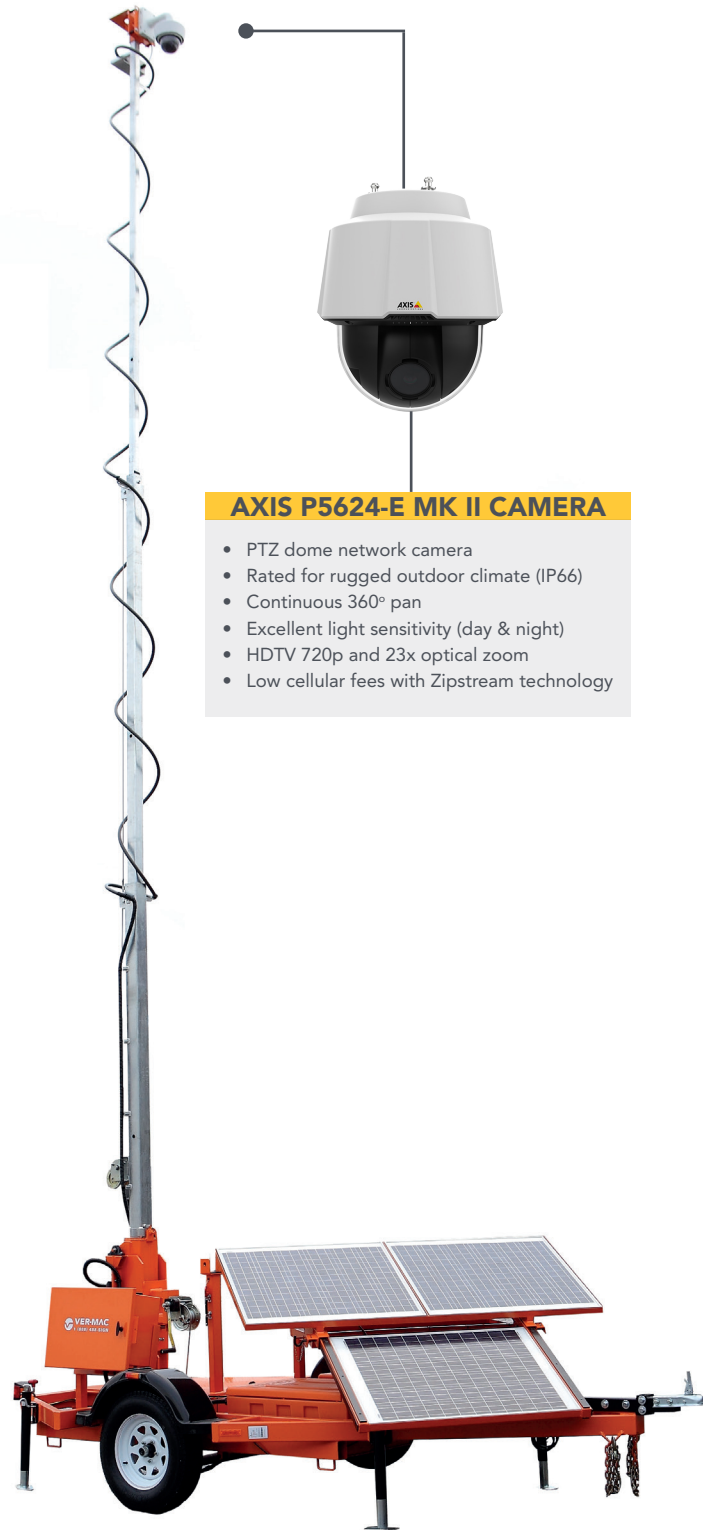
# VER-MAC

## CT-2430 TRAILER-MOUNTED CAMERA

The CT-2430 is a portable camera trailer designed to provide height and stability for the deployment of outdoor dynamic video surveillance. The CT-2430 camera trailer is perfect to remotely monitor work zones, construction sites, special events or any application where permanent cameras are not available or feasible.

### FEATURES & BENEFITS

- **30' galvanized mast** – rotates 360 degrees and retracts for easy transport
- **Tilt-and-Rotate solar panels** – maximize solar recharging and increase battery life
- **12 VDC / solar power system** – sustainable video surveillance anywhere
- **Environmentally friendly** – no generator, noise or pollution
- **Wireless communication** – remote monitoring from your PC, laptop, tablet or smartphone
- **Multi-use** – accepts most IP video surveillance cameras and non-intrusive traffic sensors
- **Compact design** – deploys in 10 minutes and easy to tow and store
- **PTZ camera control** – pan, tilt and zoom on your desired location
- **Preset views** – create several views for instant one-click redirecting of camera



### AXIS P5624-E MK II CAMERA

- PTZ dome network camera
- Rated for rugged outdoor climate (IP66)
- Continuous 360° pan
- Excellent light sensitivity (day & night)
- HDTV 720p and 23x optical zoom
- Low cellular fees with Zipstream technology

## CT-2430

**BENEFITS OF REMOTE MONITORING**

**WORK ZONES**

- **View incidents quicker** – improving emergency response
- **Smart Work Zone** – monitor congestion “hot spots”
- **Integrate into TMC** – manage with existing cameras

**CONSTRUCTION SITES**

- **Protect equipment** – discourage theft and vandalism
- **Save time and money** – less surveillance personnel needed
- **Manage work site** – improve scheduling and logistics

**SPECIAL EVENTS**

- **Prevent incidents** – view and alert security immediately
- **Video recording** – incident record for investigation
- **Manage pedestrians and motorists** – improve safety and mobility

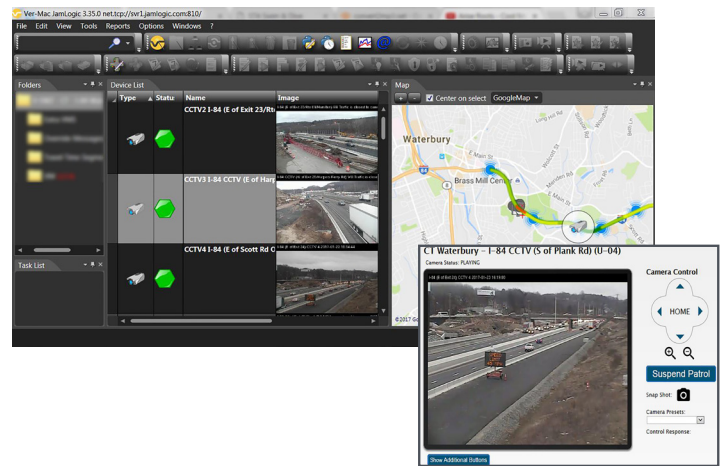
**HIGH-QUALITY CONSTRUCTION**

- **Galvanized mast** – complete protection from rust
- **Powder coating superior finish** – impact, humidity, salt spray and rust resistant
- **4 leveling jacks** – for stabilization and easy transportation
- **Manual lift mechanism** – for quick deployment
- **Heavy-duty plastic fenders** – for durability
- **Plastic battery boxes** – to minimize battery corrosion
- **Lockable control box** – for security
- **2-in. (51 mm) coupler or 3-in. (76 mm) pintle eye** – for easy towing

**JAMLOGIC SOFTWARE**

CT-2430 comes with Ver-Mac’s high-speed modem with GPS to maximize your productivity, efficiency and profitability all remotely from your office or home!

- View your equipment in a list and GPS map view
- View you camera images on a single screen
- Interactive list and map view
- Integrate with PCMS and sensors
- View communication status and battery voltages



**OVERALL DIMENSIONS**

- Overall length: 189 in. (4791 mm)
- Overall width: 90 in. (2292 mm)
- Operating height: 377 in. (9563 mm)
- Traveling height: 63 in. (1591 mm)
- Axle/suspension: 1588 kg (3,500 lb.)
- Weight (approx.): 1280 kg (2,822 lb.)

**GENERAL SPECIFICATIONS**

- 30 amp battery charger
- 30’ galvanized mast

**OPTIONS**

- Stream live video of work zone
- Record video
- Traffic sensor

Ask for custom options available to meet your needs.

- 1-year warranty on complete trailers
- 2-year warranty on electronic components manufactured Ver-Mac

YOUR LOCAL DISTRIBUTOR



1781, BRESSE STREET, QUEBEC, QUEBEC, G2G 2V2, CANADA  
 T: 418-654-1303 TF: 888-488-7446 F: 418-654-0517  
 VER-MAC.COM