



VER-MAC

SP-3248V SPEEDCAM

TRAILER-MOUNTED SPEED, LICENSE PLATE AND PHOTO LOGGING CAMERA SYSTEM

Ver-Mac's SP-3248V SpeedCam system is designed to **automatically** capture a picture of a speeding vehicle, along with its speed and license plate number. Combined with Ver-Mac's speed awareness trailer and Ver-Mac's SpeedLog software, the SpeedCam is a cost-effective alternative to other automated license plate recognition (ALPR) systems. The SP-3248V SpeedCam is the ideal speed enforcement tool for mining, oil, utility, and many other private applications that have recurrent speeding problems.

FEATURES AND BENEFITS

HIGH-END TRAFFIC CALMING DEVICE

Get all the benefits of our standard speed feedback signs, plus the camera and software to capture and manage recurrent speeding vehicles.

SPEEDLOG SOFTWARE

Simple-to-use web interface that allows you to capture pictures, license plates and speeds.

POINT-AND-GO SETUP

With automatic discovery and native in-browser streaming, setting up a traffic enforcement camera has never been simpler. Simply point at the road and use the visual cues from your tablet or smartphone to confirm correct aiming.

TWO LANE COVERAGE

When mounted at the side of a roadway, a single SpeedCam can record vehicles from two adjacent lanes, and can track vehicles at speeds ranging between 6 and 99 mph (10 - 160 km/h) in both directions.

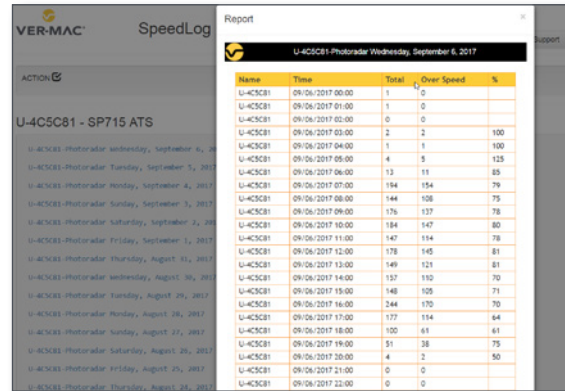
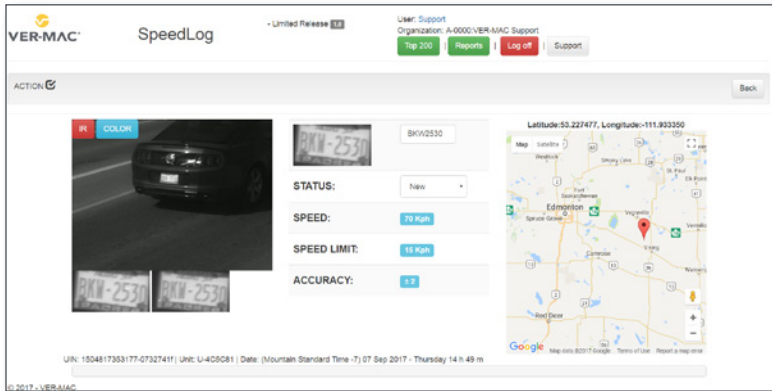
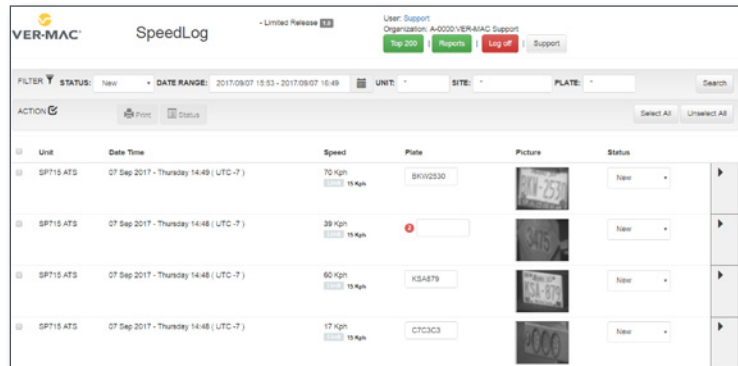
SELF-CONTAINED

SpeedCam units include two camera sensors, an Infrared illuminator, and a dual-core processor. Ver-Mac's exclusive on-board algorithms track vehicle license plates to accurately compute vehicle speeds and to count traffic flow.



SPEEDLOG SOFTWARE

- Automatically logs vehicles that exceeded the speed limit
- View the unit, date time, logged speed, speed limit, plate number, plate picture and status at a glance
- Review infrared or color picture of the plates and vehicles
- Flag dangerous recurrent speeding vehicles
- Ability to manually modify the plate number, status, etc.
- Auto GPS location of each deployed unit
- Generate reports (E.g. over speed vehicles per hour per day)



DISPLAY

- Speed display panel: 32 in x 35 in (810 mm x 889 mm)
- Full matrix display: 32 x 48 pixels
- High-definition display cards
- 1 LED per pixel
- Automatic brightness adjustment

DIMENSIONS AND WEIGHT

- Overall length: 132 in (3344 mm)
- Overall width: 70 in (1790 mm)
- Operating height: 136 in (3462 mm)
- Travelling height: 100 in (2538 mm)
- Weight (approx.): 1350 lb (612 kg)

OPTIONS

- Battery charger
 - Data logger
 - Modem with GPS
 - Data plan (requires modem)
 - Stealth technology
- Other options are available to meet your needs.

WARRANTY

- 1-year warranty on complete units
- 2-year warranty on electronic components manufactured by Ver-Mac

