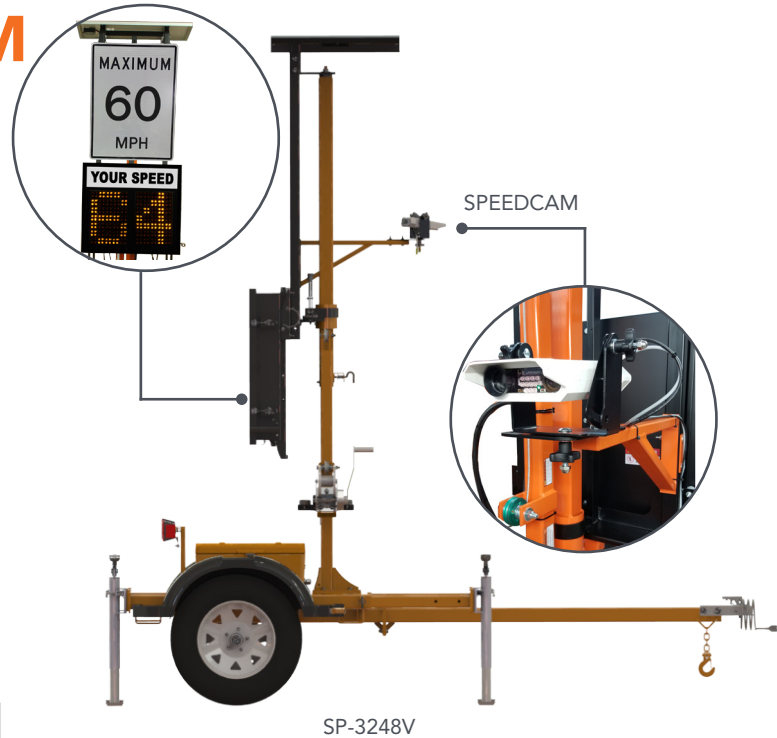


## SP-3248V SPEEDCAM

### TRAILER-MOUNTED SPEED, LICENSE PLATE AND PHOTO LOGGING CAMERA SYSTEM

Ver-Mac's SP-3248V SpeedCam system is designed to **automatically** capture a picture of a speeding vehicle, along with its speed and license plate number. Combined with Ver-Mac's speed awareness trailer and Ver-Mac's SpeedLog software, the SpeedCam is a cost-effective alternative to other automated license plate recognition (ALPR) systems. The SP-3248V SpeedCam is the ideal speed enforcement tool for mining, oil, utility, and many other private applications that have recurrent speeding problems.

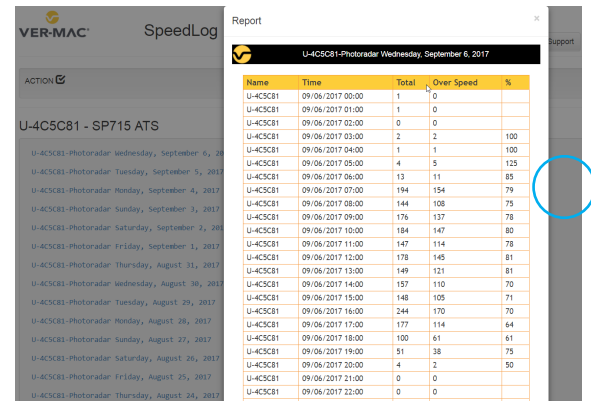
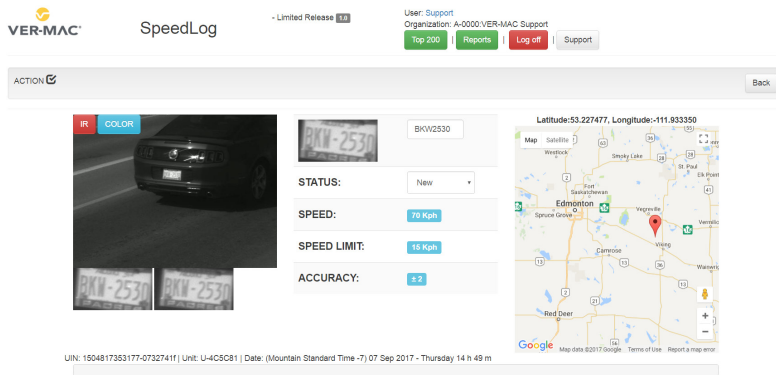
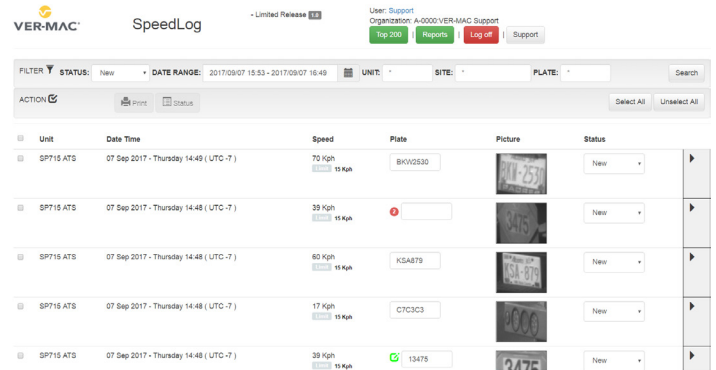


#### FEATURES & BENEFITS

- **High-End Traffic Calming Device** – Get all the benefits of our standard speed feedback signs, plus the camera and software to capture and manage recurrent speeding vehicles.
- **Speedlog Software** – Simple-to-use web interface that allows you to capture pictures, license plates and speeds.
- **Point-And-Go Setup** – With automatic discovery and native in-browser streaming, setting up a traffic enforcement camera has never been simpler. Simply point at the road and use the visual cues from your tablet or smartphone to confirm correct aiming.
- **Two Lane Coverage** – When mounted at the side of a roadway, a single SpeedCam can record vehicles from two adjacent lanes, and can track vehicles at speeds ranging between 6 and 99 mph (10 - 160 km/h) in both directions..
- **Self-Contained** – SpeedCam units include two camera sensors, an Infrared illuminator, and a dual-core processor. Ver-Mac's exclusive on-board algorithms track vehicle license plates to accurately compute vehicle speeds and to count traffic flow.

**SPEEDLOG SOFTWARE**

- Automatically logs vehicles that exceeded the speed limit
- View the unit, date time, logged speed, speed limit, plate number, plate picture and status at a glance
- Review infrared or color picture of the plates and vehicles
- Flag dangerous recurrent speeding vehicles
- Ability to manually modify the plate number, status, etc.
- Auto GPS location of each deployed unit
- Generate reports (E.g. over speed vehicles per hour per day)



**DISPLAY**

- Speed display panel: 32 in x 35 in (810 mm x 889 mm)
- Full matrix display: 32 x 48 pixels
- High-definition display cards
- 1 LED per pixel
- Automatic brightness adjustment

**DIMENSIONS AND WEIGHT**

- Overall length: 132 in (3344 mm)
- Overall width: 70 in (1790 mm)
- Operating height : 136 in (3462 mm)
- Travelling height: 100 in (2538 mm)
- Weight (approx.): 1350 lb (612 kg)

**OPTIONS**

- Battery charger
- Data logger
- Modem with GPS
- Data plan (requires modem)
- Stealth technology

Other options are available to meet your needs.

- 1-year warranty on complete units
- 2-year warranty on electronic components manufactured Ver-Mac

YOUR LOCAL DISTRIBUTOR



1781, BRESSE STREET, QUEBEC, QUEBEC, G2G 2V2, CANADA  
 T: 418-654-1303 TF: 888-488-7446 F: 418-654-0517  
 VER-MAC.COM